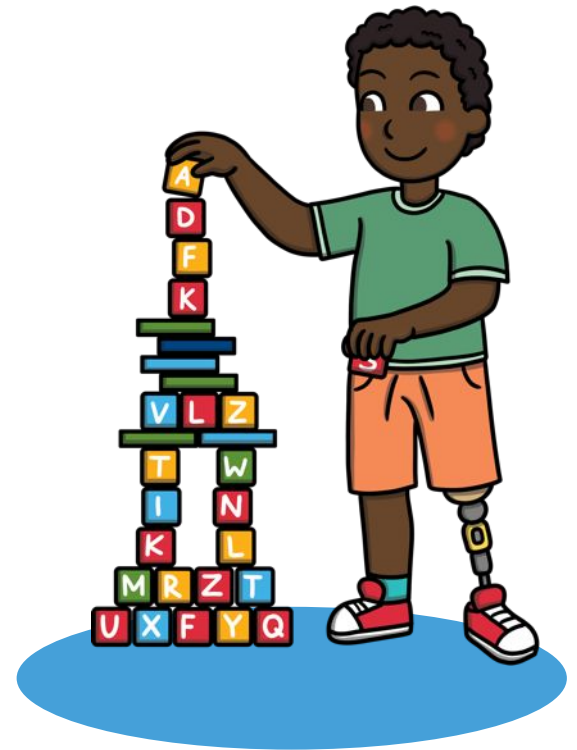
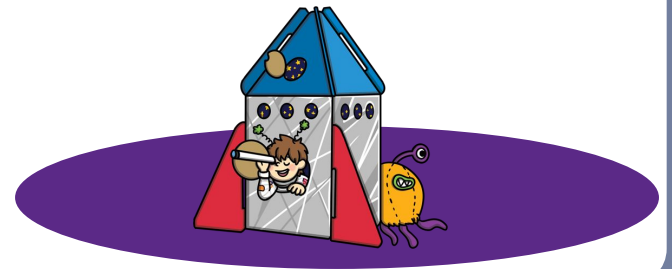


Welcome to Year 1



Transition

- The first half term builds on your child's experiences in EYFS.
- Initially, it is play based, with a hands on learning approach as we settle children into the school day.
- It is a gradual transition building up to a more formal structure prior to October half term.
- Each class has 1 class teacher and 1 LSA every morning.
- Children have a morning break and teachers have the option to take the children outside for a break in the afternoons too. Lunch time is 12:00-13:00



Lessons

- In the first half term, we have a short teaching input for English and Maths on alternate days. Each input will be followed by small group, adult led tasks for roughly 15/20 minutes.
- When your child is not completing a task, they will be able to access the continuous provision in the classroom.
- We will initially assess where the children are so we can plan our lessons accordingly. Your child's progress will be shared with you during parents evenings and in an end of year report.
- When children complete adult led tasks, this will usually be completed at a desk and sitting on a chair. We complete lots of practical activities and brain breaks so that the children are not at their desk for too long!
- Year 1 also record work in maths, writing and topic books.



Phonics

- There is a big focus on phonics in Year One.
- During the Summer Term in June there is a government Phonics Screening check for each child. This consists of 20 real words and 20 pseudo-words. “The pseudo-words provide the purest assessment of phonic decoding because they will be new to all children, and so there will be no unintended bias based on visual memory of words or vocabulary knowledge.” (Gov.uk)
- Each day we will complete one main phonics session using The Little Wandle scheme. Phonics activities also occur throughout the day. We will introduce a new sound/sounds each day and revise the previous sounds too.



Challenge and Support

- Children are assessed daily and formal assessments are carried out half termly. Appropriate support and challenge will be provided as necessary.
- Weekly graphemes, spellings and tricky words and the year one high frequency word lists can all be found on the school website. There are also links to support videos by Little Wandle.
- Keep up sessions take place for children who need support to keep up and plug gaps identified in a lesson.

Reading

- We use Little Wandle small group reading practise in school at least twice a week. The children read a text which has been matched to their phonics according to assessments at least 2 times before being sent home as their reading book. (By this time they will be very familiar with the text. They will be able to read it themselves with fluency and expression and will have a good understanding.
- (Their reading book may seem too “easy” but we assure you they have been selected carefully and this repeated read is crucial) Feel free to extend your child by asking them to write out a sentence or point to specific words or play matching games with the words from the books. Even activities like inventing a new ending or story innovation where they can change the characters, setting, story elements to make a personalised version of the story all work well.
- **IT IS ESSENTIAL** that these books are returned to school on a **Thursday** as other children will need to use these books the following week. Please keep the books in your child's book bag.



School Library

- Library books will be changed on Fridays. These books CAN be kept at home until the Friday library session. The idea with library books is that they are texts to be shared at home. It is not the expectation that the child is able to read the book independently.
- Your child is given time in the library to choose their own book.

English & Maths

- We use the 'Take One Book' literature based framework for teaching English. Each half term has an overarching theme based on a quality text chosen from a rigorously curated collection of fiction, non-fiction, poetry and picture books.

This scheme encourages children to read and write different text types such as stories, instructions, lists, letters & poems. We use a hook to engage the children and give the lessons purpose.

We use the 'NCTEM' scheme for Maths and a practical approach to learning. We also have a 'Mastering Number' lesson in the afternoon.

- Across all of our subjects, we encourage '**Mastery**'. This means, we encourage our children to dive deeper into our subjects, explain their answers and apply different methods. Children who have grasped concepts quickly are given additional challenges and opportunities to further deepen their understanding and apply their knowledge.



Foundation Subjects & Handwriting

- Foundation subjects include: PE, History, RE, PSHE, Geography, Art, DT and computing. We will complete one foundation subject input each afternoon session and this will increase to two subjects as the year goes on.
- PE is on Tuesdays and Thursdays, each class also gets to attend Forest School for half a term. Earrings must be removed on these days and kits are worn to school.
- There is a big focus on handwriting in Year One. We encourage children to write using a pre cursive style when they are ready in preparation for joining in year two. We also encourage children to write neatly on the line with clear ascenders/descenders and to try to develop their writing stamina. Support will be given to those that need help with pencil control/grip etc.

We are also taking part in the EEF 'Otto Club' research project.



Other bits and bobs!

Home Learning:

We have put this half terms 'Home Learning Passports on the website'. An update will be uploaded each half term to the school website. It is not compulsory. We just want to encourage children to do some fun activities at home.

Spellings, graphemes and tricky words for the week (Linked to what they have been learning during Little Wandle phonic sessions) are also published on the website. (Spellings are not formally tested)

Snacks:

Please provide 2 snacks - see website

Afternoon snack is also provided by the school.

Please do not put snacks in a lunchbox style container.

Children do not need extra bags, just a book bag, no pencil cases or toys

Parent Helpers:

If you would be interested in helping in class, please contact the office as we would love to have you!

Thank you for attending today!

We look forward to maintaining a positive relationship with you. If you ever have any questions or need support with something, our door is always open. Please catch us before or after school or email us using the school email address. We want to work with you as a team as it is your child's well being and education that is at the heart of everything we do!

parents@writtleinfantschool.com



